

Admission

0-23 months - FREE

2-8 years old - \$12,00

9 y.o. and up - \$17,00

65+ and vets - \$10,00



astros
PLANETARIUM

Contact us

Phone: (504) 220-3528

www.astrosplanetarium.com

Schedule

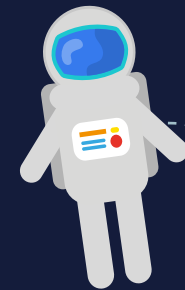
Monday - Sunday

8 a.m. to 8 p.m.

Show times vary



astros
PLANETARIUM
1234 MAIN STREET, NEW ORLEANS, LA, 70125





Show times

THE DARK UNIVERSE

Friday, Saturday, and Sunday
12 p.m., 2 p.m., and 4 p.m.

THE STARS JOURNEY

Tuesday, Thursday and Saturday
12 p.m., 4 p.m., and 6 p.m.

TO SPACE AND BACK

Monday, Wednesday and Friday
10 a.m., 2 p.m., and 4 p.m.

NEW SPACE SCIENCE

Tuesday, Thursday and Saturday
12 p.m., 4 p.m., and 6 p.m.

*Planetarium shows
starts on the hour



The Planets and the

The Solar System is made up of the Sun and all of the smaller objects that move around it. Apart from the Sun, the largest members of the Solar System are the eight major planets. Nearest the Sun are four fairly small, rocky planets - Mercury, Venus, Earth and Mars.

The Solar System is full of material left over from the formation of the planets. Grains of dust and small chunks of rock that travel through space are known as.

Meteoroids. If they enter a planet's atmosphere and burn up, they are known as meteors. Larger pieces of rock, which survive long enough to.

Crash into a planet's surface, are known as meteorites. The Solar System is made up of the Sun and all of the smaller objects that move around it. Apart from the Sun, the largest members of the Solar System are the eight major planets. Nearest the Sun are four fairly small, rocky planets - Mercury, Venus, Earth and Mars.

The Solar System is full of material left over from the formation of the planets. Grains of dust and small chunks of rock that travel through space are known as. Meteoroids. If they enter a planet's atmosphere.

